

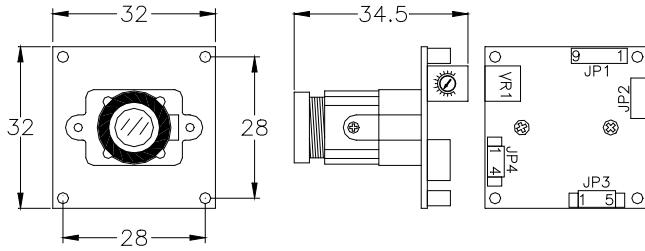
S10 Specification

TV SYSTEM	NTSC	PAL
IMAGE SENSOR	1/3-INCH I.L CCD IMAGE SENSOR	
CCD TOTAL PIXELS	~ 410K	~ 470K
SYNC SYSTEM	INTERNAL	
MINIMUM ILLUMINATION	0.012 LUX@F1.2 /20 IRE AGC ON B/W 0.0014 LUX@F1.2 /20 IRE SENS-UP (32X) B/W	
LENS & VIEW ANGLE	3.6mm F2.0 / 92°	
RESOLUTION	540 TVL	
WHITE BALANCE	Mode	ATW / AWC
	Range	3200 ~ 10000 °K
S / N RATIO	50DB (MIN) / 58DB (TYP) (GAMMA, APERTURE, AGC, OFF)	
DNR (DIGITAL NOISE REDUCE)	S/N UP 4.5dB	
GAIN CONTROL	AGC ON / OFF	
SENSE UP	ON /OFF (PRESET X4 ,OPTION X32)	
H - MIRROR FUNCTION	OFF / ON	
V - MIRROR FUNCTION	OFF / ON	
B.L.C. FUNCTION	OFF / ON	
COLOR BAR	OFF / ON	
AUTO IRIS	A.E.S. / DC-IRIS	
ELECTRONIC SHUTTER	1/60~1/120,000 sec.	1/50~1/120,000 sec.
VIDEO OUTPUT	1.0V p-p composite video at 75 ohm With monitor output	
OPERATION TEMPERATURE	-20°C TO 50°C	
OPERATIONAL HUMIDITY	WITHIN 85% RH	
POWER SUPPLY	DC12V±1V / 150MA	

Model No. S10 企_VER 1.0

Model number 53S10

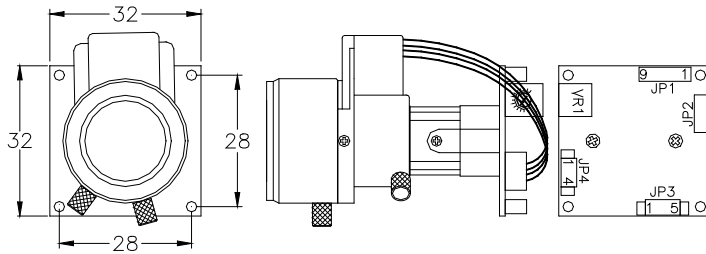
Dimension (Unit : mm / $\pm 0.3\text{mm}$)



Item No. MTV-53S10H

- CVBS(PAL/NTSC)
- Board Lens
- POWER DC 12V

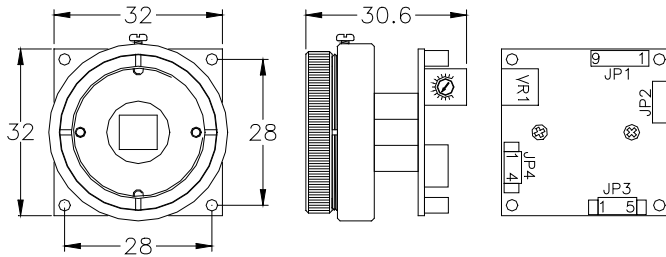
Features : S10 common functions



Item No. MTV-53S10H-VF

- CVBS(PAL/NTSC)
- VF Lens 2.8~11mm
- POWER DC 12V

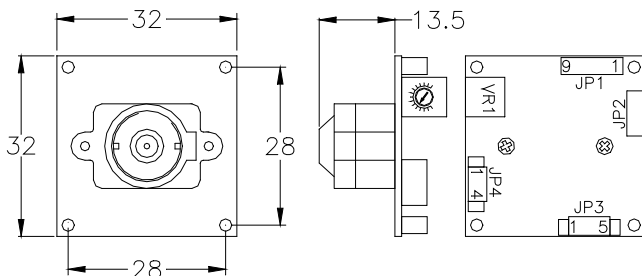
Features : S10 common functions



Item No. MTV-53S10H-CS

- CVBS(PAL/NTSC)
- C/CS mount
- POWER DC 12V

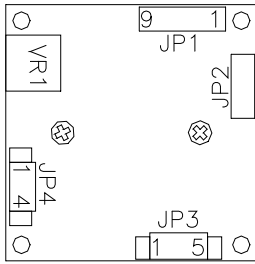
Features : S10 common functions



Item No. MTV-53S10HI (Cone)

- CVBS(PAL/NTSC)
- Pinhole Lens (Cone)
- POWER DC 12V

Features : S10 common functions



JP1		JP2	JP3		JP4	
P1	AES/ALC	For manufacturer not release	P1	+12V	P1	CONTROL -
P2	AGC ON/OFF		P2	GND	P2	CONTROL +
P3	ATW/AWC		P3	VIDEO OUT	P3	DRIVER+
P4	BLC ON/OFF		P4	MONITOR OUT	P4	DRIVER -
P5	H-MIRROR		P5	GND		
P6	V-MIRROR					
P7	SENS-UP					
P8	VIDEO/COLOR BAR					
P9	GND					